

MONTHLY MEMBERSHIP PROGRESS REPORT

District 23 A

Results as of: 6/30/2020

GMT:

LOCATION CONNECTICUT

GMT CA

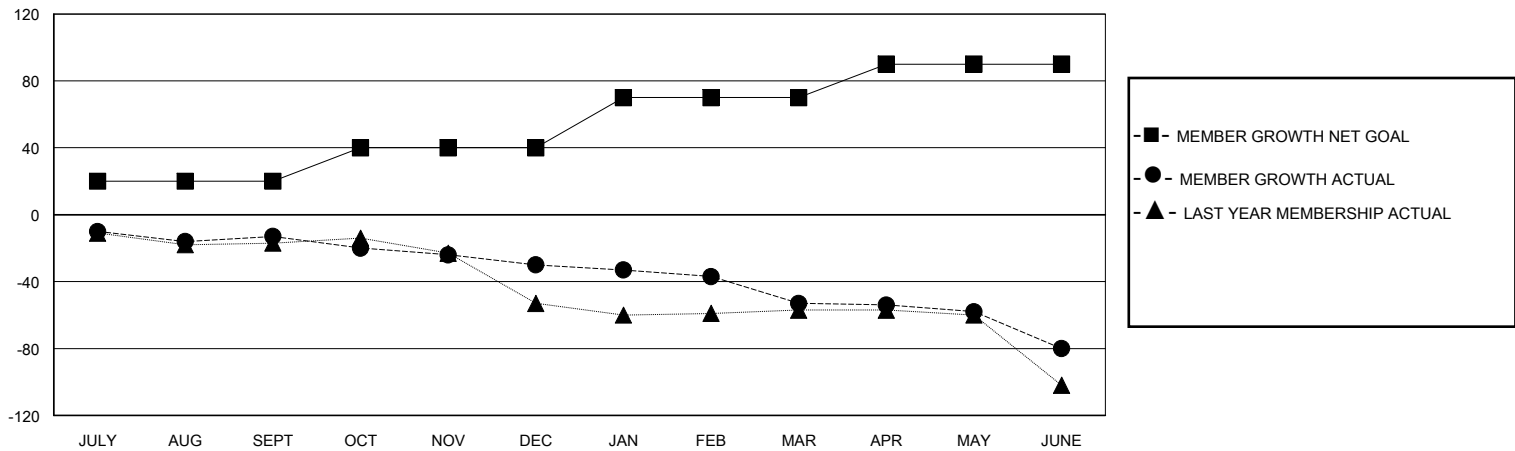
Clubs			
RESULTS FOR 2019-2020			
QUARTER	NEW CLUB GOAL	NEW CLUBS	DROPPED CLUBS
JULY/AUG/SEPT	0	0	1
OCT/NOV/DEC	0	0	0
JAN/FEB/MAR	1	0	0
APR/MAY/JUNE	0	0	1

Members			
RESULTS FOR 2019-2020			
QUARTER	MEMBER GROWTH NET GOAL	MEMBER GROWTH ACTUAL	DROPPED MEMBERS ACTUAL (including transfers)
JULY/AUG/SEPT	20	16	27
OCT/NOV/DEC	20	16	33
JAN/FEB/MAR	30	19	40
APR/MAY/JUNE	20	10	33

GOALS AND ACTUAL NEW CLUBS CUMULATIVE



GOALS AND ACTUAL MEMBERS CUMULATIVE



DROPPED CLUBS: 2

23 CLUBS OF 50 ADDED 1 OR MORE NEW MEMBERS

GENDER DISTRIBUTION

MALE 875 (67.46%)
FEMALE 422 (32.54%)

DROPPED MEMBERS

[CLICK HERE FOR CUMULATIVE MEMBERSHIP DATA](#)

DECEASED	17
CLUB CANCELLED	0
OTHER	116
TOTAL	133

TOTAL FAMILY UNIT MEMBERS	176
FAMILY MEMBERS PAYING HALF DUES	90